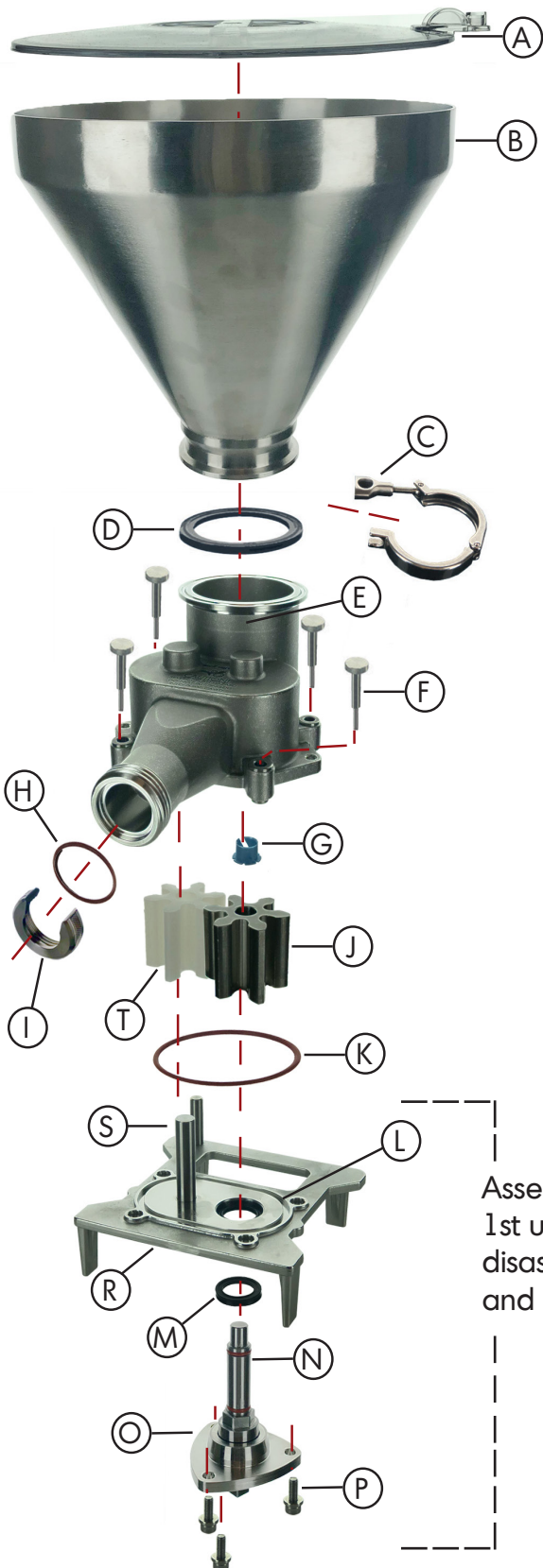


**WARNING!**  
**SEVERE CRUSH HAZARD. KEEP FINGERS OUT OF PUMP INLET AND OUTLET.**  
**(SEE ENGRAVED WARNING ON PUMP HOUSING)**

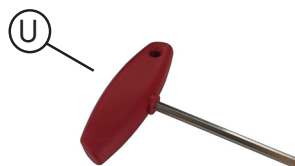


1. Place Shaft Seal [M] onto Drive Shaft [N] on Shaft Plate [O] so that red dot faces down.
  2. Place Shaft Plate onto back of Cover so that 3 screw holes align.
  3. Insert and tighten Screws [P] until snug and Shaft Plate sits flush against bosses using 5mm hex wrench [U] included.
  4. Place O-ring [K] in groove [L] of Pump Cover [R].
  5. Place Drive Impeller [J] onto Drive Shaft .
- NOTE: Engage hexagonal drive of Drive Shaft with recess on Drive Impeller.**
6. Slide Idler Impeller [T] onto Idler Shaft [S].
  7. Place blue Nylon Bearing [G] into hole in Housing [E] so that key on Bearing lines up with keyway and it sits flush.
  8. Fasten Housing to Cover with Thumb Screws [F] and **hand tighten making sure that all screws are tightened evenly in a cross pattern!**
  9. Place Gasket [D] onto groove on top of Housing.
  10. Attach Hopper [B] to Housing with Clamp [C] and **hand tighten only.**
  11. Place O-ring [H] on appropriate 7/8" Ø spout and push up to collar on spout, insert spout into Housing and lock in place with Spout Retaining Nut [I].
  12. To disassemble pump - reverse procedure.

**CLEANING**

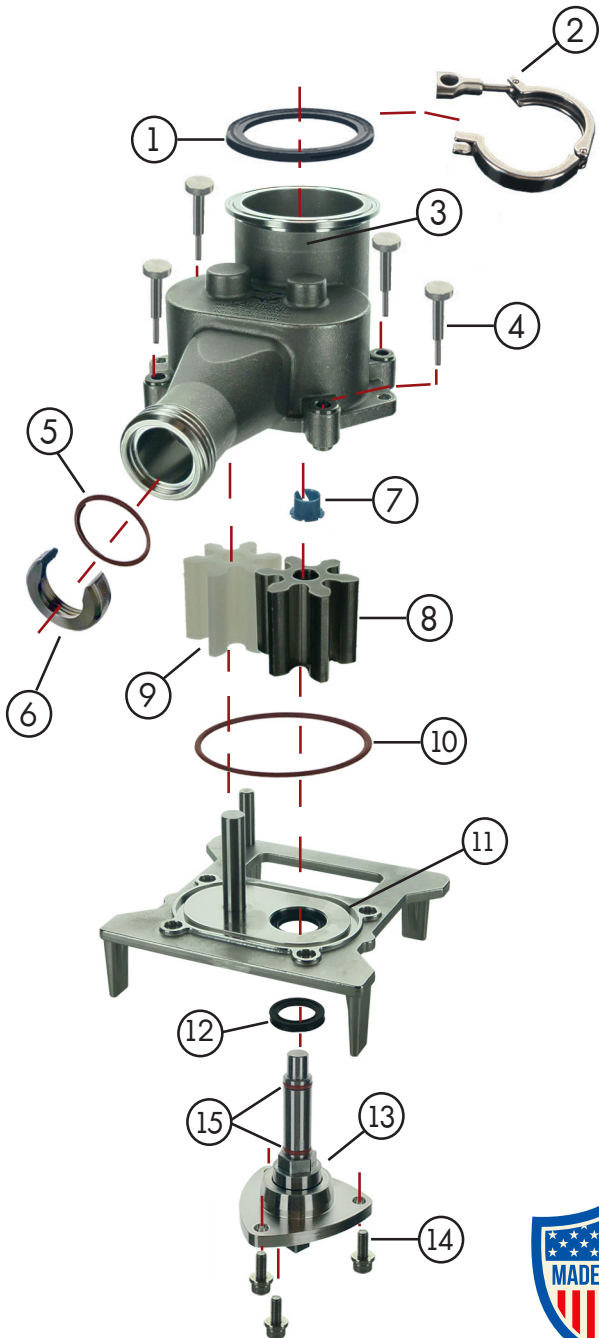
After use, disassemble pump and wash all parts thoroughly in HOT, SOAPY WATER. Keeping parts clean will ensure proper operation and also extend the life of the pump. Pump parts may also be immersed in a sanitizing solution as per local regulations.

Assembled for shipping and 1st use. After 1st use, disassemble for washing and sanitizing.



**WARNING!**  
**IMPORTANT INSTRUCTIONS**  
**READ AND**  
**UNDERSTAND COMPLETELY**

**WARNING!**  
 SEVERE CRUSH HAZARD. KEEP FINGERS OUT OF PUMP INLET AND OUTLET.  
 (SEE ENGRAVED WARNING ON PUMP HOUSING)



Ref. No.	Description	Qty.	Part Number
1	Gasket	1	FT-20047
2	Clamp	1	FT-20048
3	Pump Housing Assembly	1	FS-3152
4	Thumb Screw	4	FS-2879
5	O-Ring	1	RP-2371
6	Spout Retaining Nut	1	FS-2344
7	Nylon Bearing	1	FS-2306
8	Impeller Driver (SS)	1	FS-3183
9	Impeller Idler (HDPE)	1	FS-20560
Pump Cover SFS Type Assembly			SFS-3928
10	O-Ring	1	FS-2310
11	Pump Cover SFS	1	SFS-21413
12	Shaft Seal (Nitrile)	1	FS-2302
13	Plate Shaft Drive Assy.	1	SFS-3926
14	Screw & Washer	4	SRP-3914
15	O-Ring	2	FS-2801

**WARNING!**  
 IMPORTANT INSTRUCTIONS  
 READ AND  
 UNDERSTAND COMPLETELY

